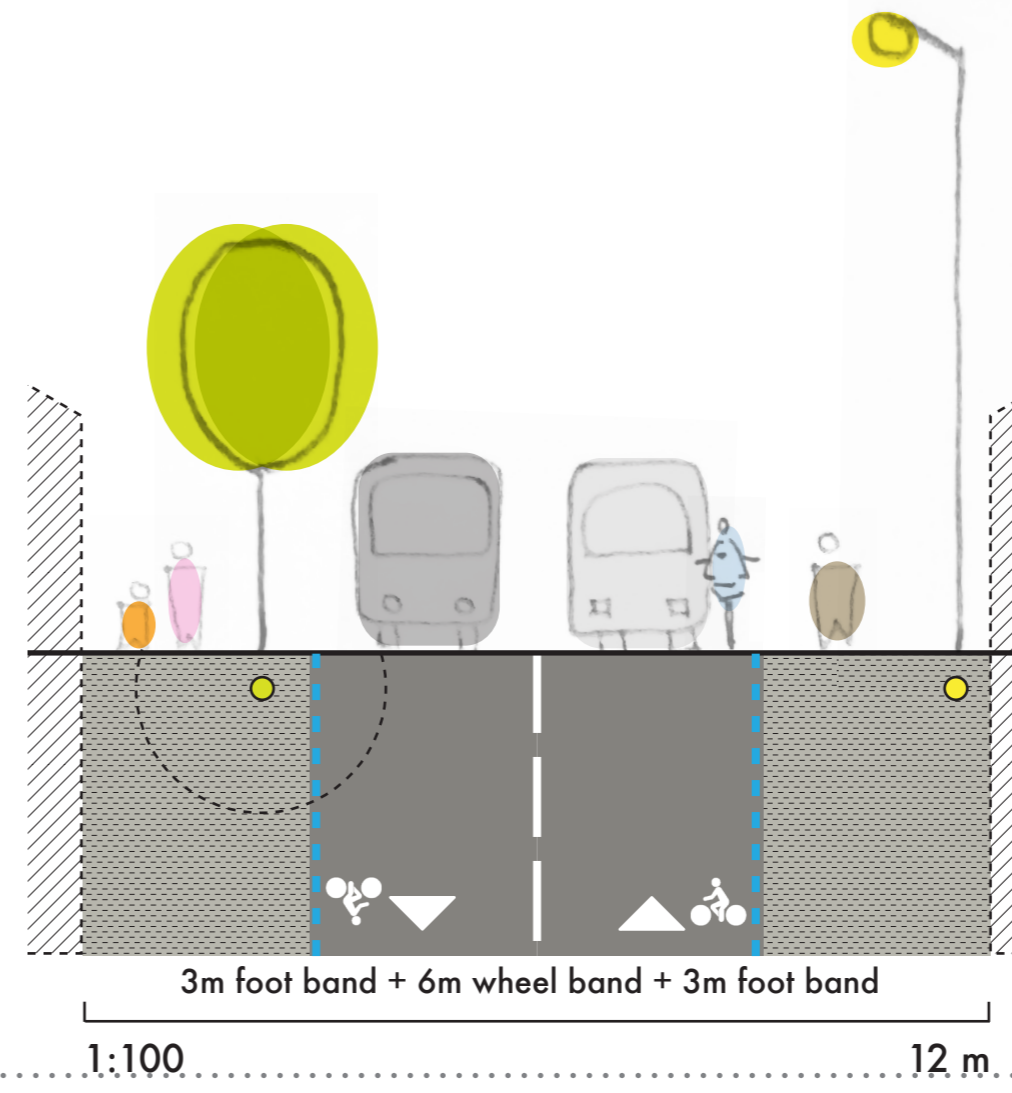


5^a/ Mobility I

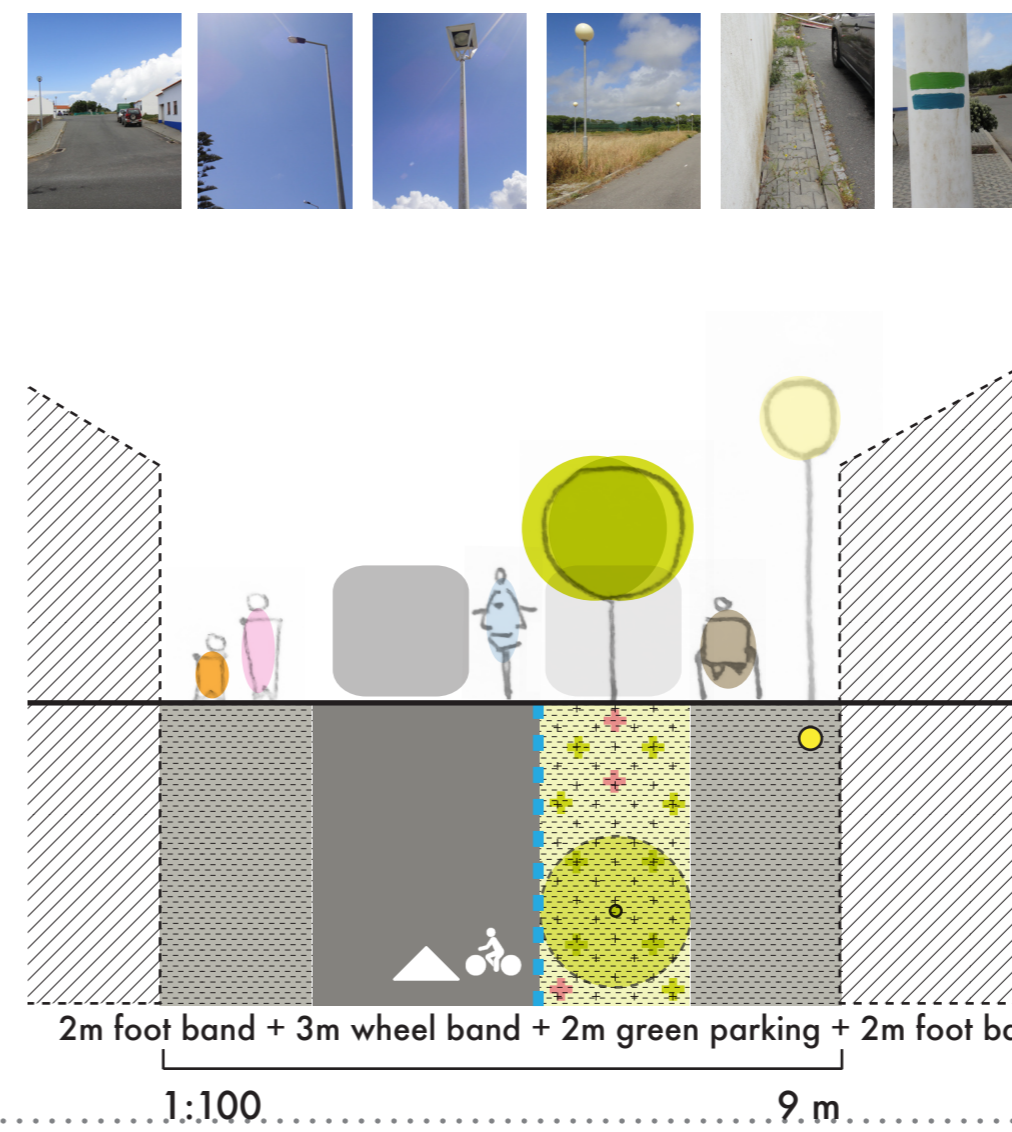
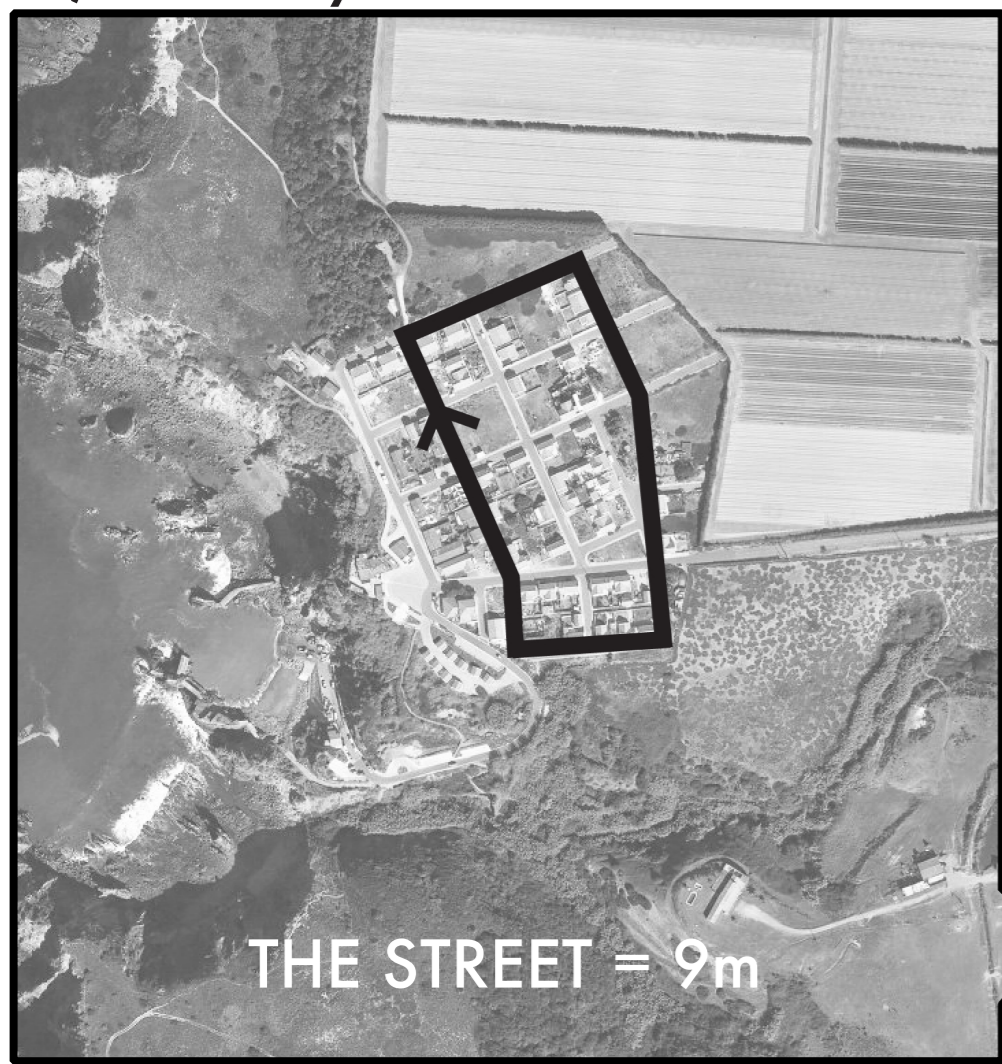


DREAMCATCHER «R(s)» anchored on the existing situation, this dreamcatcher wants to work the site forces, REVEALING their potential and leveraging crosscutting ideas. this REDEFINITION aims to value Azenha do Mar identity in RESPONSE to its actual difficult situation. today's context invites to a «back to basics» approach, REVISITING and REINVENTING ecological principles: REDUCE, REUSE, RECYCLE.

DREAMCATCHER applies these «R(s)» to the 3 main dimensions of the site: territory structure, public space and architecture.

$$Re_{definition} = Re_{duce} + Re_{use} + Re_{cycle}$$

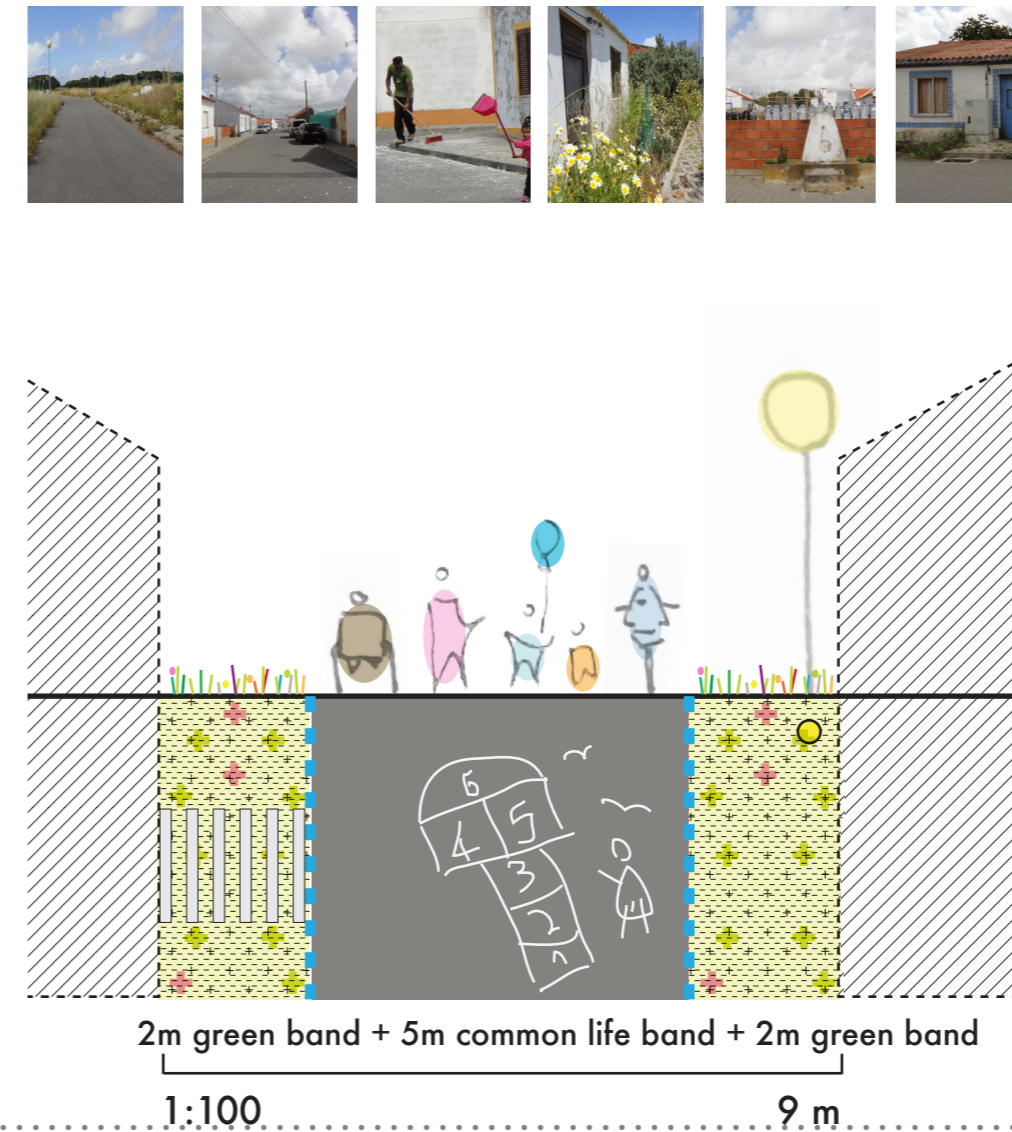
5^b/ Mobility II



Reduce -

- RE_{duce} number of roads
- RE_{duce} surface dedicated to heavy circulation
- RE_{duce} asphalt band profile dimension
- RE_{duce} parking surface
- RE_{duce} lack of pedestrian surface
- RE_{duce} lack of green
- RE_{duce} lack of shadow
- RE_{duce} lack of rainwater lines and infiltration surfaces
- RE_{duce} lack of oxygen producers
- RE_{duce} lack of biodiversity in the urbanized areas
- o RE_{use} existing profile dimension and walls
- o RE_{use} existing urban lighting, proposing an artistic project
- + RE_{cycle} parking surface
- + RE_{cycle} part of the asphalt band

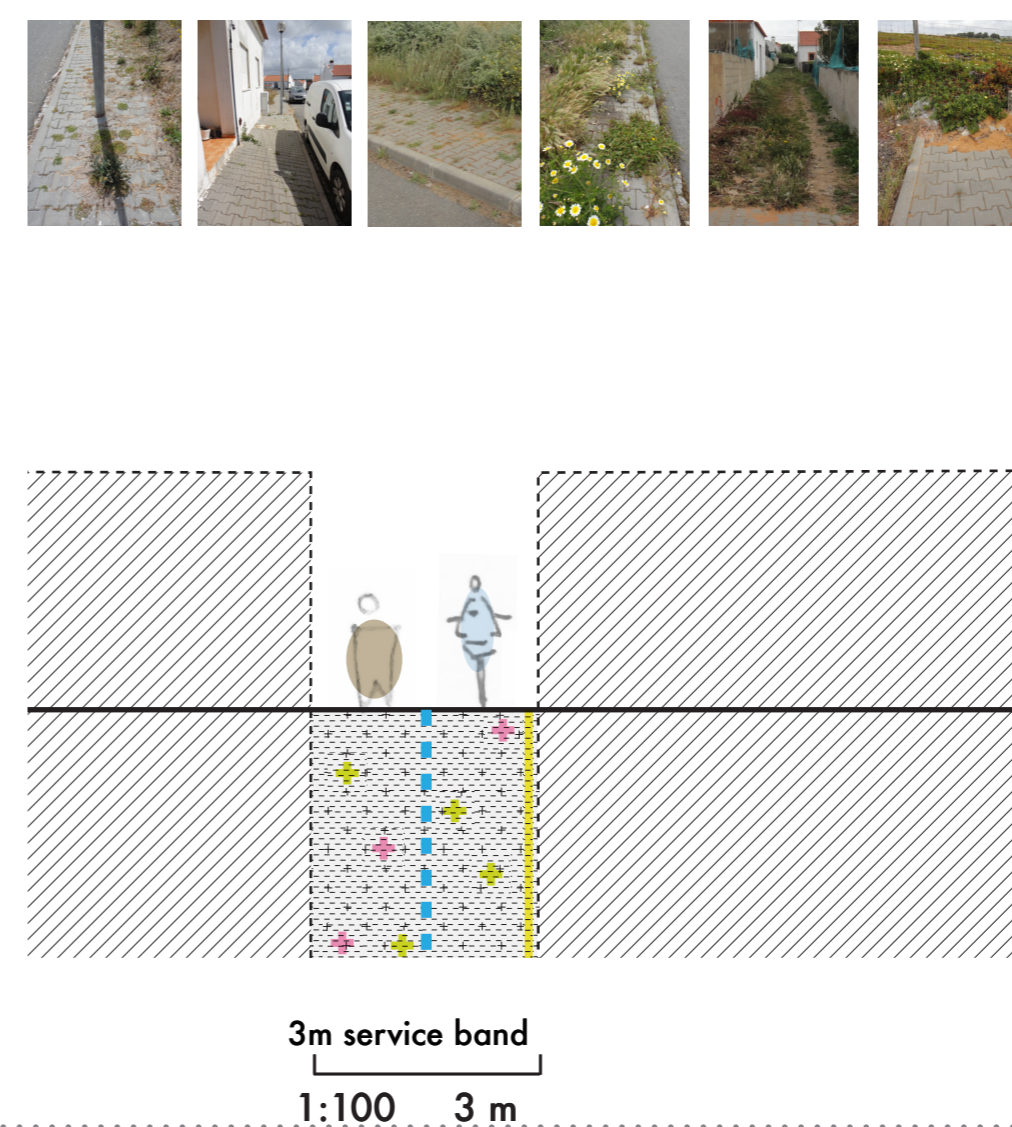
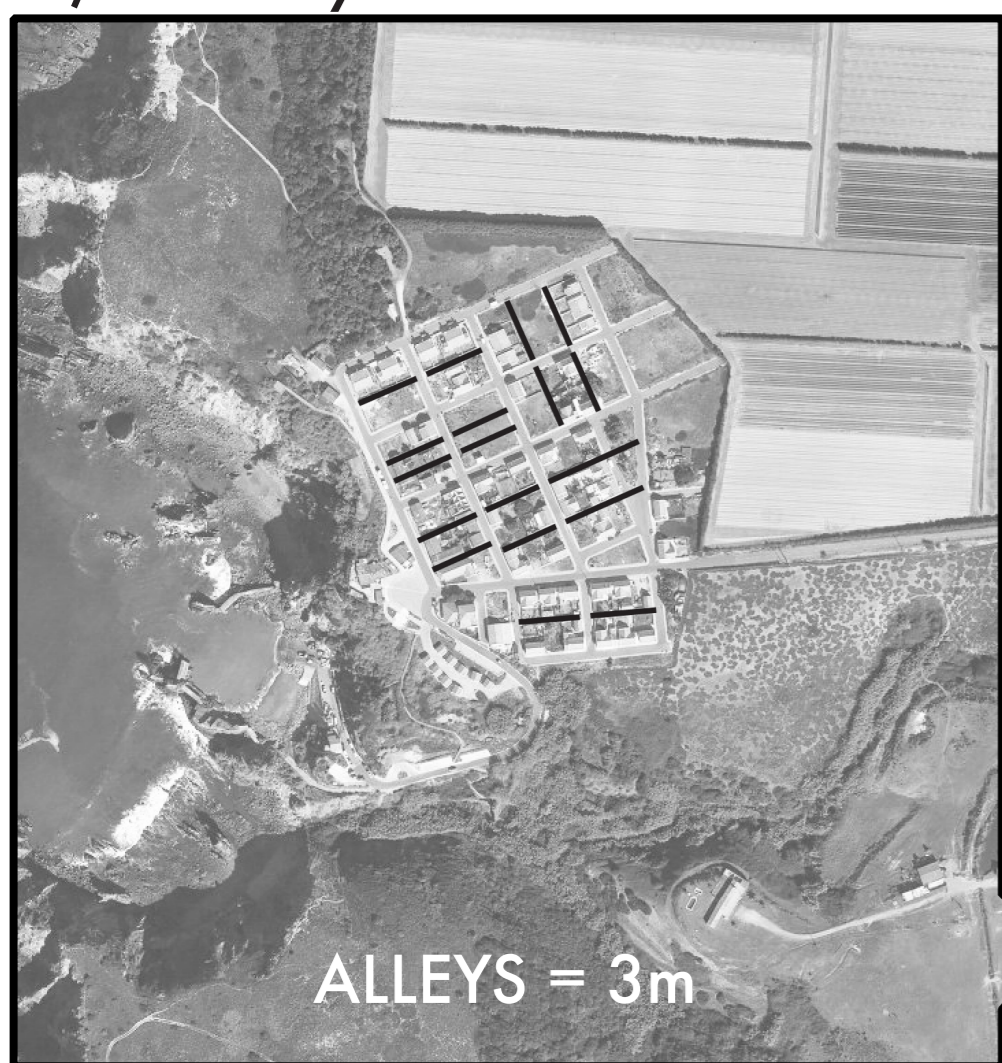
5^c/ Mobility III



Reuse °

- RE_{duce} number of streets
- RE_{duce} surface dedicated to heavy circulation
- RE_{duce} parking surface
- RE_{duce} lack of pedestrian and common life surface
- RE_{duce} lack of green
- RE_{duce} lack of rainwater lines and infiltration surfaces
- RE_{duce} lack of biodiversity in the urbanized areas
- o RE_{use} existing profile dimension and walls
- o RE_{use} asphalt band
- o RE_{use} existing urban lighting, proposing an artistic project
- o RE_{use} existing infra structures (fountains, network boxes,...)
- + RE_{cycle} parking surface
- + RE_{cycle} sidewalks pavement to re-design central areas
- + RE_{cycle} road kerbs on site and in other central areas

5^d/ Mobility IV



Recycle +

- RE_{duce} unfriendly dirt surface
- RE_{duce} lack of urban lighting by integrating ground lighting lines
- RE_{duce} lack of designed rainwater lines
- RE_{duce} lack of accessibility
- RE_{duce} lack of urbanity
- o RE_{use} existing profile dimension and walls
- o RE_{use} green and biodiversity
- + RE_{cycle} pavement from other suppressed zones
- + RE_{cycle} urban accessibility, approaches and perspectives
- + RE_{cycle} asphalt from other suppressed zones